

INSTALLATION MANUAL SVL CAB KEYLESS START (77700-10655) KUBOTA SVL65C, SVL75C, SVL95C

CALIFORNIA PROPOSITION 65

⚠ WARNING:

Cancer and reproductive harm - www.P65Warnings.ca.gov

BEFORE INSTALLING SVL KEYLESS START

- Read all instructions and safety instructions in this manual.
- Refer to your machine's operator's manual and safety instructions on your machine's safety decals.
- Wear appropriate personal protective equipment (PPE) when performing work.
- Disconnect negative (-) terminal on battery before performing work.
- Hang a "DO NOT OPERATE" tag in operator station.

⚠ WARNING

To avoid personal injury or death:

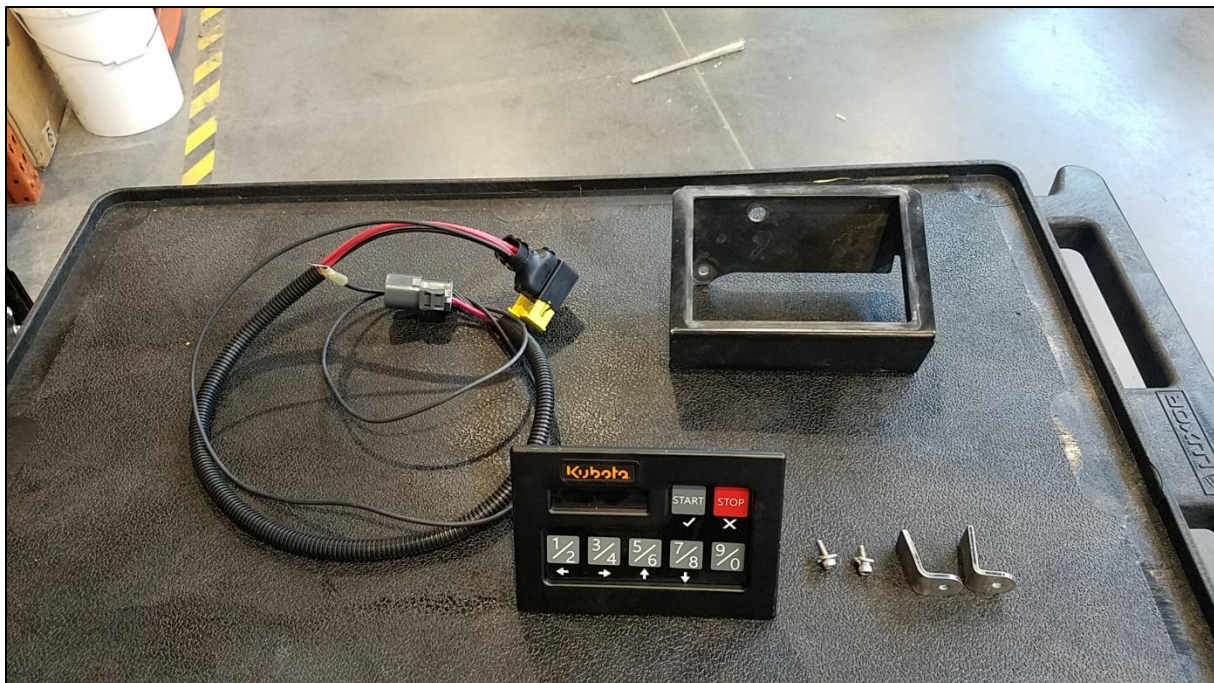


- Shut off machine and disconnect negative (-) terminal before working on the electrical circuit.
- Do not short circuit the battery, starter motor or electrical circuits.

Estimated assembly time: 30 min

■ CHECKING PARTS

[For SVL CAB Keyless Start System]



NOTE:

- Check the contents as shown in the parts list

■ PARTS LIST

Ref. No.	Part No.	Part Name	Q'TY	REMARKS
1	77700-10655	SVL CAB Keyless Start Keypad Kit	1	
2		SVL Bracket	1	NSS
3		SVL Wire Harness	1	NSS
4		M8 Bolt	1	
5		Allen bolt, split washer	2	

NSS: Not sold separately

IMPORTANT: Keep all decals clean and legible. Replace all missing, illegible, or damaged decals.

■ MACHINE PREPARATION

⚠ WARNING

To avoid personal injury or death:

- Park the machine on a firm and level surface.
- Lower attachments to the ground.
- Apply the parking brake if applicable.
- Stop the engine and remove the key from the machine if applicable.
- Disconnect negative (-) terminal on battery before performing work.

■ ASSEMBLY PROCEDURE

⚠ WARNING

To avoid personal injury or death:

- Disconnect the negative terminal from the battery before working on the electrical circuit.
- Do not short circuit the battery, starter motor or electrical circuits.

NOTE:

- **All assembly procedures listed within this manual are generally representative of the machine model for which the manual is written.** Your machine may be configured differently, but the outline for the procedure should still be followed. For further support for any issues not covered within the pages of this manual, please contact your local Kubota representative.

1. Remove RH middle bolt from upper section of cab glass. This bolt will NOT be reused. (Figure 1)
2. Remove RH middle cap nut and flat washer from lower section of cab glass. (Figure 1) Flat Washer will NOT be reused.



Figure 1.

3. Align SVL Bracket <2> lower hole with stud on lower glass. Align upper hole where bolt was removed in step 1. Insert M8 bolt with flat washer and lock washer. (Figure 2)



Figure 2.

4. Thread cap nut onto lower stud. Tighten cap nut and upper bolt.
5. Connect SVL Wire harness to connector in back of keypad. Ensure that the connector is firmly connected and locked. (Figure 3)



Figure 3.

6. Feed wire harness through bracket opening and lay keypad into bracket.
7. Secure keypad into bracket using (2) "L" brackets and Allen headed bolts with lock washers. Allen headed bolts thread directly into keypad housing (Figure 4)

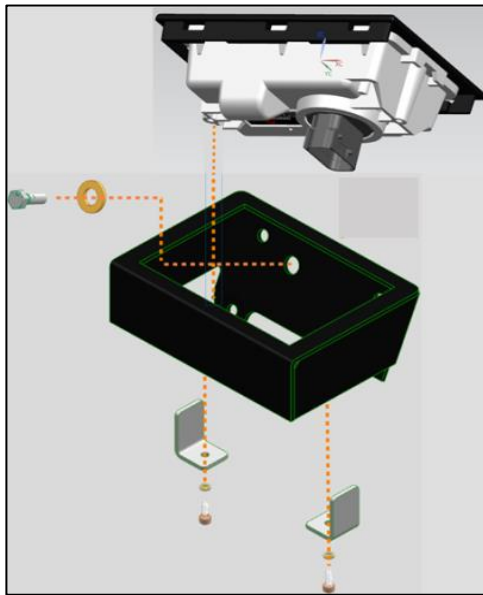


Figure 4.

8. Remove RH cup holder and switch panel by removing (6) bolts using 10mm socket. (Figure 5) Disconnect all switches to completely remove panel. Be sure to label switch connectors.



Figure 5.

9. Remove key switch from panel by removing small Phillip's head screws.
10. Connect Keyless Start wire harness connector to machine key switch connector.
11. Remove M10 bolt from RH arm rest using 14mm wrench. Attach black ground wire from Keyless Start wire harness using ring terminal. Re-tighten bolt. (Figure 7)

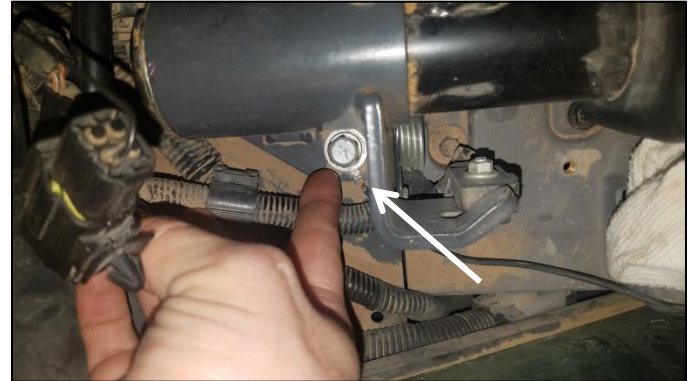


Figure 7.

12. Temporarily attach battery ground terminal. Press "Start" button to ensure keypad powers up. If keypad does not start check all connections.
13. Disconnect battery ground terminal.
14. Re-install RH plastic panels. Route harness down and around panel. (Figure 8)



Figure 8.

15. Re-connect machine battery ground terminal.